

THE DANIEL & MELANIE LOFT SPACE DESIGN

A CUSTOM ROOM
DESIGN CREATED BY
INTERIOR HOME
INSPIRED BY YOU

“

MOODY | VINTAGE | VICTORIAN VIBES

A luxurious, ornate living room with a large chandelier, a fireplace, and a large rug. The room is filled with rich, dark wood paneling and a large, patterned rug. A large, ornate mirror is mounted on the wall above a fireplace. The overall atmosphere is one of elegance and sophistication.

A VERSATILE SPACE FOR A
COUPLE EMBODYING TRUE
LOVE. IMAGINE A SPACE WHERE
A CREATIVE SPIRIT MERGES
WITH AN INSIGHTFUL MIND - THIS
ROOM IS TAILORED FOR BOTH
WORK AND RELAXATION.
DUBBED AS THE "STYLISH
GRANDMA" OF SPACES, IT
FOSTERS A SERENE YET
ARTISTIC AMBIANCE, PROVIDING
INSPIRATION AND TRANQUILITY.
SERVING AS A RETREAT FROM
THE RELENTLESS OUTSIDE
WORLD, IT BLENDS VINTAGE
ELEMENTS WITH VIBRANT
COLORS. REPRESENTING THE ESSENCE OF
YOUR RELATIONSHIP, THIS
ROOM ENCAPSULATES IT ALL.



Royal Silk
Behr #140E-2



Rosy Tan
Behr #130E-3

THE ELEMENTAL INSPIRATION

THE REALITY

WHILE YOU CAN'T MAKE YOUR SPACE ANY LARGER OR INTO A GRAND VICTORIAN ROOM, YOU CAN STILL PULL FROM INSPIRATION.



KEEP IT SIMPLE: OPT FOR LIGHTER SHADES FOR THE WALLS AND WALL ELEMENTS, AND DARKER TONES FOR THE CEILING AND FLOOR ELEMENTS. THIS COLOR SCHEME WILL GUIDE YOUR EYES ACROSS THE ROOM, CREATING A SOOTHING ATMOSPHERE THAT EMBRACES YOU LIKE A WARM HUG. FOR INSTANCE, CONSIDER ROYAL SILK FOR THE WALLS, ROSY TAN FOR THE CEILING, AN OLIVE GREEN RUG, AND CHARTREUSE CURTAINS. TO CREATE HARMONY, MATCH THE FURNITURE THAT SITS ON THE FLOOR WITH DARKER TONES, WHILE LIGHTER TONES LIKE GOLD FRAMES AND WHITE MATS CAN COMPLEMENT WALL ELEMENTS SUCH AS VINTAGE OR DARKER IMAGES.

THE PERSONALITIES

BOTH OF YOU ARE INQUISITIVE, OPEN-MINDED, AND VALUE PERSONAL SPACE, ALLOWING EACH OTHER A SIGNIFICANT AMOUNT OF FREEDOM WHILE ALWAYS RETURNING HOME TO ONE ANOTHER.

MEL IS ATTUNED TO A VIBRANT WORLD OF EMOTIONS, BRINGING A POETIC AND ARTISTIC TOUCH TO HER EXPERIENCES. SHE IS SENSITIVE TO HER OWN FEELINGS AND THOSE OF OTHERS, WHICH CAN CAPTIVATE DANNY, WHO TYPICALLY PERCEIVES EMOTIONS IN A MORE STRAIGHTFORWARD MANNER. MEL'S PASSIONATE, CREATIVE, AND NURTURING NATURE ENCOURAGES DANNY TO BE MORE PRESENT IN THEIR PHYSICAL EXPERIENCES.

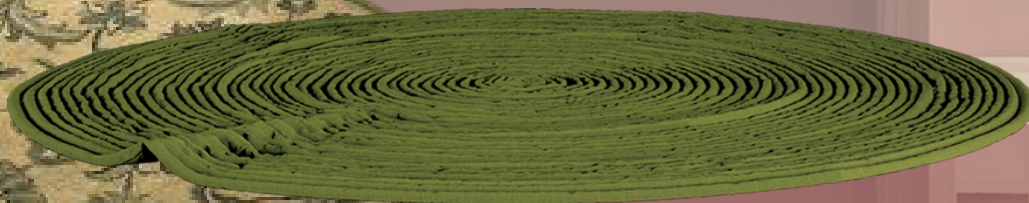
ON THE OTHER HAND, DANNY IS LOGICAL, RATIONAL, AND METHODOICAL, WITH A CURIOUS MINDSET. HE BRINGS A GROUNDED AND FOCUSED APPROACH TO HIS ENDEAVORS: LIVING LIFE AUTHENTICALLY AND INTENTIONALLY. HE PROVIDES STABILITY FOR MEL DURING TURBULENT EMOTIONAL TIMES AND WHOLEHEARTEDLY ACCEPTS HER, OFFERING HEALING SUPPORT TO HER AS HIS PARTNER.

TOGETHER, YOU BOTH EXCEL IN NUANCED COMMUNICATION, OFTEN COMMUNICATING THROUGH PRIVATE JOKES, EXPRESSIONS, AND GESTURES THAT FORM A UNIQUE LANGUAGE BETWEEN YOU. BOTH SHARE AN UNCONVENTIONAL AND PLAYFUL NATURE, BONDING OVER THEIR DISTINCTIVE QUALITIES. THEIR RELATIONSHIP IS CHARACTERIZED BY MUTUAL ACCEPTANCE, FOSTERING INTIMACY AND ALLOWING EACH INDIVIDUAL TO EXPRESS THEMSELVES FREELY AND AUTHENTICALLY.

THE DANNY BREAKDOWN

PILLOWS & CURTAINS: CHARTREUSE

TIP: OPT FOR THIS COLOR BEING THE LEAST FREQUENTLY USED IN THE ROOM: THIS WILL ALLOW THE COLOR TO STAND OUT EVEN WITH MINIMAL PRESENCE IN THE SPACE.

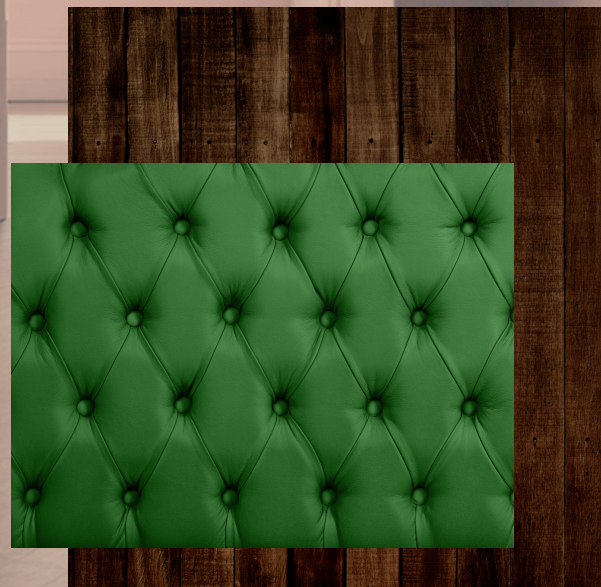


FLOORING THROW RUG: OLIVE GREEN

TIP: ADD A TEXTURED OR PATTERNED RUG TO BRING MORE COMPLEXITY TO THE ROOM

FURNITURE: DARK WOOD & DARK COLORS

TIP: KEEPING THE FURNITURE A DARKER SHADE WILL SUPPORT GROUNDING THE ROOM. BRINGING YOUR EYE LOWER AND BALANCING THE DARKER CEILING COLOR



THE MEL BREAKDOWN

WALL DECOR:

GOLD CHUNKY FRAMES

TIP: TO DECORATE ON A BUDGET. DISCOVER OLD FRAMES AND PAINT THEM GOLD. HANG MULTIPLE FRAMES NEAR THE CEILING TO DRAW THE EYE UPWARDS AND CREATE THE ILLUSION OF A LARGER SPACE.



LIGHTING:

GOLD VICTORIAN CHANDELIERS AND SCONCES

TIP: GET WIRED LIGHTING & CUT OFF THE WIRE TO MOUNT TO WALL/CEILING WITHOUT ELECTRICAL WORK. PLACE BATTERY OPERATED LIGHTS WITH REMOTE ACCESS TO GET THE LOOK FOR LESS WORK.

DECOR ELEMENTS:

VINTAGE VASES

TIP: FIND DIFFERENT SHAPES AND STYLES TO ADD DEMENSION TO THE DECOR. FILL THE VASES WITH LIVE FLOWER STEMS TO MATCH THE VICTORIAN ERA.



THE WHY

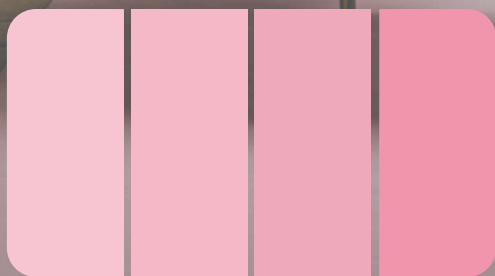
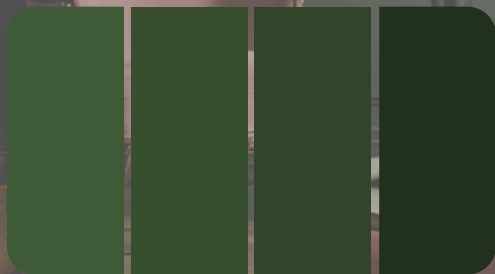
DANNY'S DESIGN REFLECTS HIS DOWN-TO-EARTH PERSPECTIVE, OFFERING A SENSE OF SECURITY AND COZINESS FOR MEL WITHIN HER ARTISTIC LIFESTYLE. HE INTRODUCES DARK TONES TO THE ROOM, BALANCED WITH ACCENT COLORS THAT MIRROR HIS CONSTANT AND GENUINE NATURE. THE ROOM WOULD LACK HARMONY WITHOUT THESE GROUNDING TONES, BUT WITH A TOUCH OF CHARTREUSE, IT COMES ALIVE WITH A SENSE OF CREATIVITY AND CURIOSITY, MUCH LIKE DANNY.

MEL'S DESIGN COMPLEMENTS HER ARTISTIC AND ECCENTRIC SPIRIT. SHE ENHANCES DANNY'S VIBRANT COLOR CHOICES, ALWAYS STRIVING TO MERGE HIS STYLE WITH HER CREATIVE VISION AND SUPPORT HIS AUTHENTIC SELF-EXPRESSION. MEL ADDS VARIOUS ELEMENTS, LIKE GOLD ACCENTS AND DIVERSE TEXTURES, TO RESONATE WITH HER MULTIFACETED CREATIVE IDENTITY. SHE ACTS AS THE FINISHING TOUCH THAT UNIFIES THE ENTIRE ROOM DESIGN.

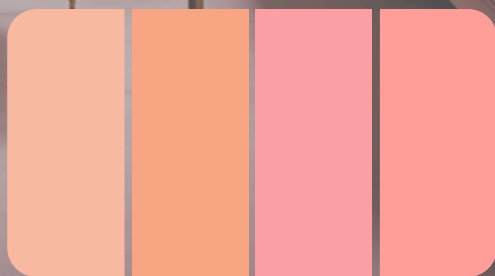
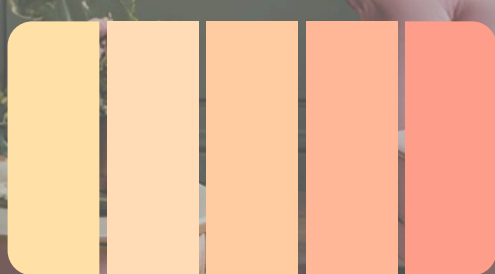
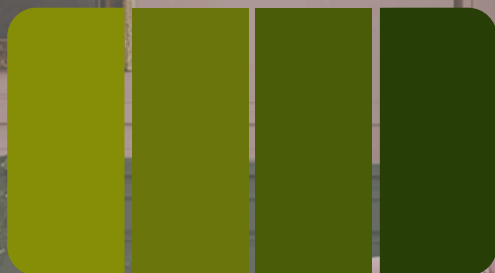
THE COLOR SCIENCE

PINK AND GREEN, BEING COMPLEMENTARY COLORS ON THE COLOR WHEEL, HARMONIZE WELL DUE TO THEIR CONTRASTING NATURE. WHEN DECORATING A ROOM, IT'S CRUCIAL TO CONSIDER THE TONES AND INTENSITIES OF THE COLORS YOU SELECT. FOR INSTANCE, CHARTREUSE, A WARM GREEN SHADE, COMPLEMENTS WELL WITH OTHER WARM HUES IN THE ROOM. TO CREATE A COHESIVE AND HARMONIOUS SPACE, OPT FOR OTHER WARM COLORS TO MATCH WITH A VIBRANT WARM TONE. GOLD ACCENTS WOULD PAIR IN A ROOM WITH WARM TONES MORE SEAMLESSLY THAN COOL TONES.

COOL TONES



WARM TONES



THE TIMELINE

PAINT THE ROOM:
ROSY TAN CEILING
ROYAL SILK WALLS,
TRIM, AND DOOR

TIME TO ACCESSORIZE:
ADD THE CHARTREUSE
CURTAINS AND THROW
PILLOWS, THE GOLD
FRAMES AND SCONCES,
AND VASES

ADD THE SMALL
TOUCHES:
THE LIVE BLOOMS IN THE
VASES, CANDLES, AND
OTHER PERSONAL
TOUCHES TO GIVE THE
ROOM YOUR OWN
FLARE

CLEAR OUT THE ROOM:
DECIDE WHAT CAN FIT
WITHIN THE NEW DESIGN
OF THE ROOM THAT YOU
ALREADY HAVE AND FIND
OTHER HOMES FOR THE
REST.

START ADDING THE BIG
ITEMS:
THE SEATING, THE OLIVE
RUG, THE DESK, THE
STORAGE

RETURN YOUR
BELONGINGS TO THE
ROOM, INCORPORATE
THE ITEMS YOU'VE
CHOSEN TO KEEP AND
ESTABLISH FRESH
ORGANIZATIONAL
ARRANGEMENTS FOR A
RENEWED SPACE.



THE EXTRA

EXPRESSING THE AUTHENTIC AND CREATIVE BOND YOU SHARE CAN BE CHALLENGING TO CAPTURE IN A SIMPLE DESIGN. TO BOTH OF YOU, YOUR CONNECTION MEANS THE WORLD. THIS RARITY SHOULD BE HONORED IN A SETTING THAT REFLECTS YOUR UNIQUE RELATIONSHIP.

BACK IN THE TRADITIONAL VICTORIAN ERA, FAMILIES USED OIL PAINTING PORTRAITS TO DISPLAY POWER AND PRESTIGE, PAYING HOMAGE TO THEIR ANCESTORS AND SHOWCASING THE FAMILY'S PROGRESSION.

TO IMMORTALIZE YOUR ENDURING LOVE, CONSIDER INCORPORATING OIL PAINTING PORTRAITS OR A SIMILAR ARTISTIC STYLE FEATURING BOTH OF YOU.

A wall gallery of black and white photographs in ornate gold frames. The photos are arranged in a dense, overlapping pattern on a light pink wall. The frames vary in shape, including rectangular, oval, and circular designs. The photos depict various scenes: portraits of men and women, a woman in a carriage, a man in a suit, a woman in a dress, and a landscape with a building. In the foreground, a tufted pink sofa with gold trim sits on a patterned rug. A small table with a vase is to the right of the sofa.

THE EXTRA

ANOTHER WAY TO ENCAPSULATE THE ENDURING LOVE YOU BOTH SHARE IN A ROOM FILLED WITH VIBRANT DESIGN AND COLOR IS BY DISPLAYING BLACK AND WHITE PHOTOS IN LARGE GOLD FRAMES.

THESE PHOTOS TRANSPORT US BACK TO AN ERA WHEN FILM WAS THE PRIMARY METHOD OF PRESERVING MEMORIES. WHICH WE MIGHT OVERLOOK TODAY. IT ADDS A TOUCH OF SOPHISTICATED ELEGANCE, VINTAGE CHARM, AND TIMELESS APPEAL, BLENDING YOUR PERSONALITIES WITH THE ROOM'S DECOR SEAMLESSLY.

INCLUDE YOURSELVES IN THESE PHOTOS, PLACES AND LANDSCAPES YOU HAVE VISITED, AND IMPORTANT PARTS OF YOUR RELATIONSHIP.

A TOUCH
OF
RENAISSANCE
TO YOUR
EVERY DAY.

FIND MORE INSPIRATION ON A
PINTEREST BOARD THAT WAS
CURATED WITH YOUR SPACE IN MIND.